

MORRIS ELEMENTARY SCHOOL

LENOX, MA, USA

EDUCATION

OVERVIEW

Morris Elementary School is located in the beautiful town of Lenox, in the Berkshire Hills of western Massachusetts, serving over 300 students with 30 classrooms, pre-school through fifth grade.

PROJECT DETAILS

Reliable Controls Authorized Dealer, Berkshire Control Mechanical LLC, successfully completed this retrofit project for Morris Elementary School.

Networked hardware includes a MACH-ProWeb controller with a VPN that is connected to two schools in the town. There are two MS/TP networks connected to the MACH-ProWeb controller. A MACH-ProCom controller is connected to the IP network and uses a Modbus connection to variable frequency drives and a BACnet® MS/TP connection to two additional variable frequency drives.

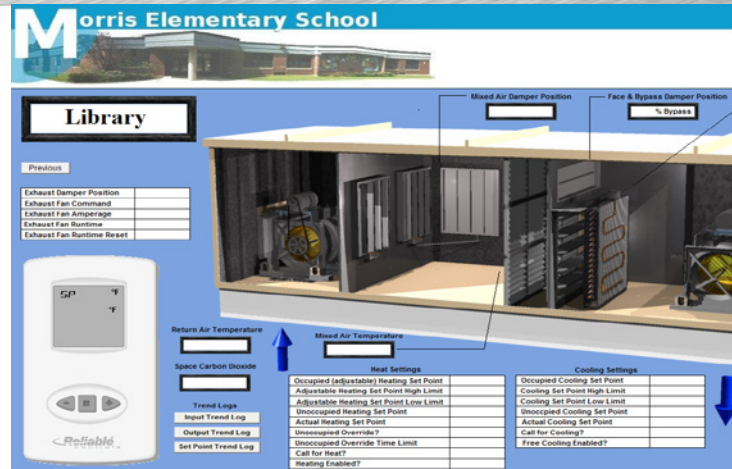
Mechanical equipment includes system controls for unit ventilators in each classroom. There are also five rooftop air handing units (AHUs), several cabinet unit heaters, baseboard radiation, and convectors.

A challenge this project presented was the installation of wiring into some places due to the replacement of the existing pneumatic controls system. This was resolved by persistent effort.

In terms of energy savings, Morris Elementary School was able to cut their natural gas usage in approximately half and significantly reduced their electric bill.

The success of this job, and because it included substantial energy savings, ultimately lead to replacing a competitor's system in the high school in the same town.

To learn more about projects using Reliable Controls® visit www.reliablecontrols.com/projects/overview



PROJECT TYPE:

Retrofit

INSTALLATION TYPE:

Boiler, CO₂ Monitoring, Fan Coil Unit, HVAC

TOTAL AREA:

5,435 m² (58,500 ft²)

NETWORK:

BACnet, EIA-485, Modbus, WAN

POINTS:

585

EQUIPMENT INSTALLED:

- 1 MACH1™
- 28 MACH-Zone™
- 4 MACH-Pro1™
- 2 MACH-Pro2™
- 16 MACH-ProZone™
- 1 MACH-ProWeb™
- 1 MACH-ProCom™

RELIABLE CONTROLS® DEALER:

Berkshire Control Mechanical LLC

www.reliablecontrols.com

